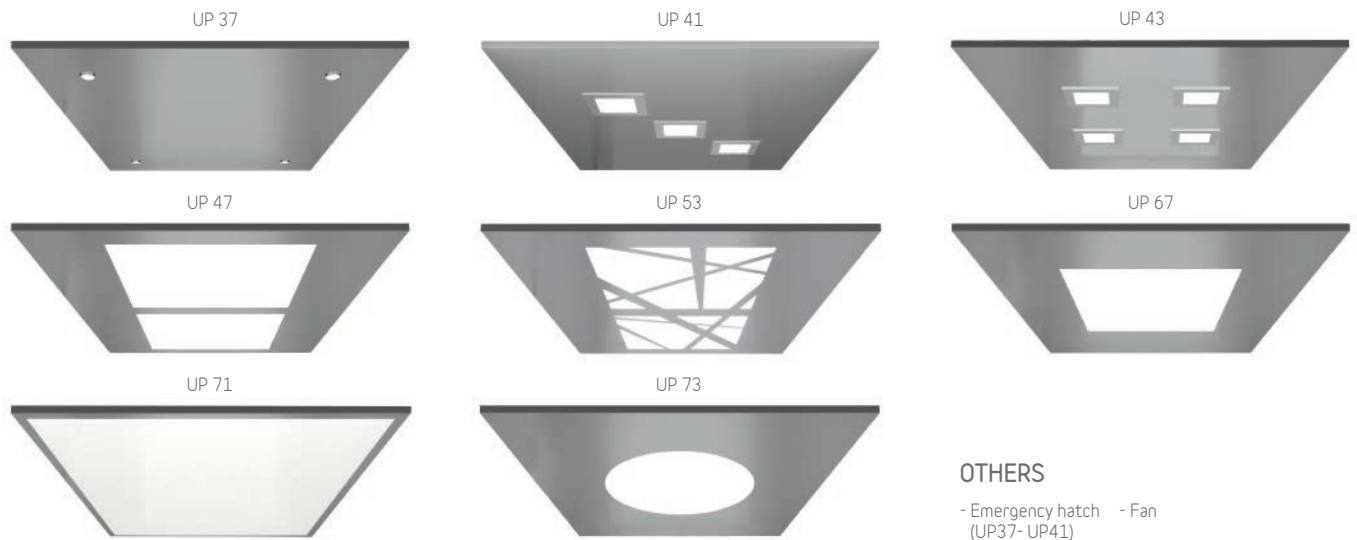


Orona 3G Public PLUS

Ceilings and lighting LED - Automatic lighting switch-off included

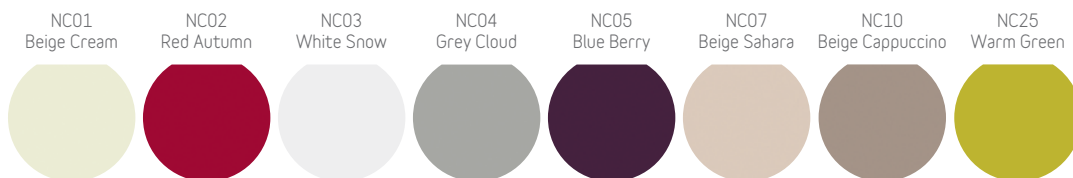
MODEL*



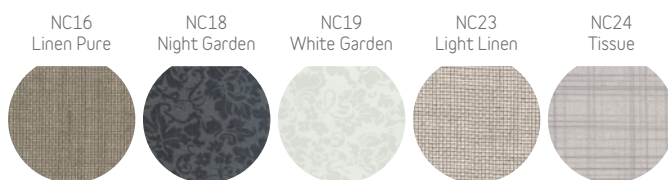
*Available Lighting models dependant on car dimensions - please enquire.

Car walls

NEOCOMPACT COLOUR



NEOCOMPACT TEXTURE



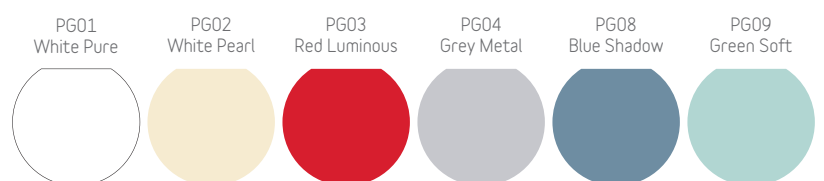
NEOCOMPACT WOOD



PANEL STAINLESS



GLASS AMBIENCE



OTHERS

- Without cladding (for local fit out)
- Tip-up seat
- 2 Entrances or 'Through car' for 180, 'Front/Adjacent' for 90 & 270

Car operating panel



OTHERS

- Double car operating panel
- Horizontal car operating panel

Car indicator



7 Segment



Dot-matrix



TFT

OTHERS

- Car direction arrows
- Overload indicator (buzzer & light)
- Voice synthesizer
- Direction arrows on entrance return
- Car gong
- Inductive acoustic coupler

Landing indicator



7 Segment



Dot-matrix



TFT



Wall landing indicator

OTHERS

- Next departure indicator
- Landing gong

Car push buttons



Orona Braille circular model



Model with additional contrast

OTHERS

- Door close push button
- Key switch push button (Standard or eurocylinder)
- External call cancelling
- Coded call

Orona 3G Series push buttons are water-resistant (IPX3 under EN 60529) and have fully passed the impact and fire tests defined in the EN 81-71 standard.

For enhanced anti-vandalism resistance needs (Category 1), Orona offers its comprehensive PPSS O3G anti-vandalism solutions, which fully complies with the EN 81-71 standard (push buttons, displays, doors, lighting, ceilings, walls, floors, mirrors, enclosures, etc.).

Landing push buttons



Push buttons to suit the lifts control type (1 or 2 push buttons)



Key switch push button (standard or eurocylinder)



Surface mounted push buttons

Mirrors

MW (Mirror 3/4 wide)
 MH (Mirror 1/2)
 MT (Mirror 3/4 narrow)
 Rear-view mirror (EN 81-70)

Bumprails

Wood
 Stainless steel
 PVC
 Double bumprail

Skirtings

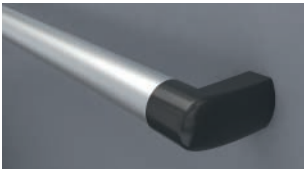
SK01 Anodized Aluminium (St St finish)
 SK02 Lacquered Aluminium

FINISH

01 Clear
 02 Smoked

Handrails

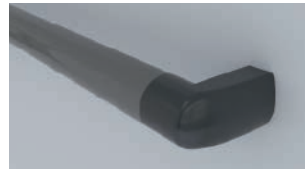
HR01 (Aluminium tube)



HR02 (Aluminium tube)



HR03 (Aluminium tube)



HR04 (Stainless steel tube)



Car operating panel material and/or ceiling and/or doors (car and landing)

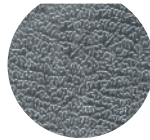
ST01
St St Base



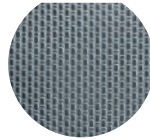
ST02
St St Plus



ST03
St St Elephant Skin Pattern



ST04
St St Linen Pattern



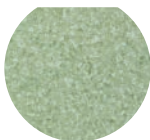
Floors

SC-PVC HIGH

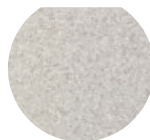
SC01
Red Cherry



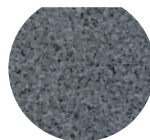
SC02
Green Leaf



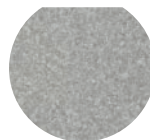
SC03
Grey Ice



SC04
Grey Storm



SC05
Grey Silver



SC06
Beige Sand



SC07
Black Circles



SW CERAMICS Available subject to dimensions

SW01
Black Basalt



SW02
Grey Cement



SW03
Grey Pearl



SW04
Beige Basalt



SW06
Brown Earth



ME-OTHER

ME01
Chequered
Aluminium



ME02
St St Chequered
Pattern



OTHERS

- Prepared for granite (23 mm)
- Prepared for PVC (23 mm or 3 mm in restricted pits)